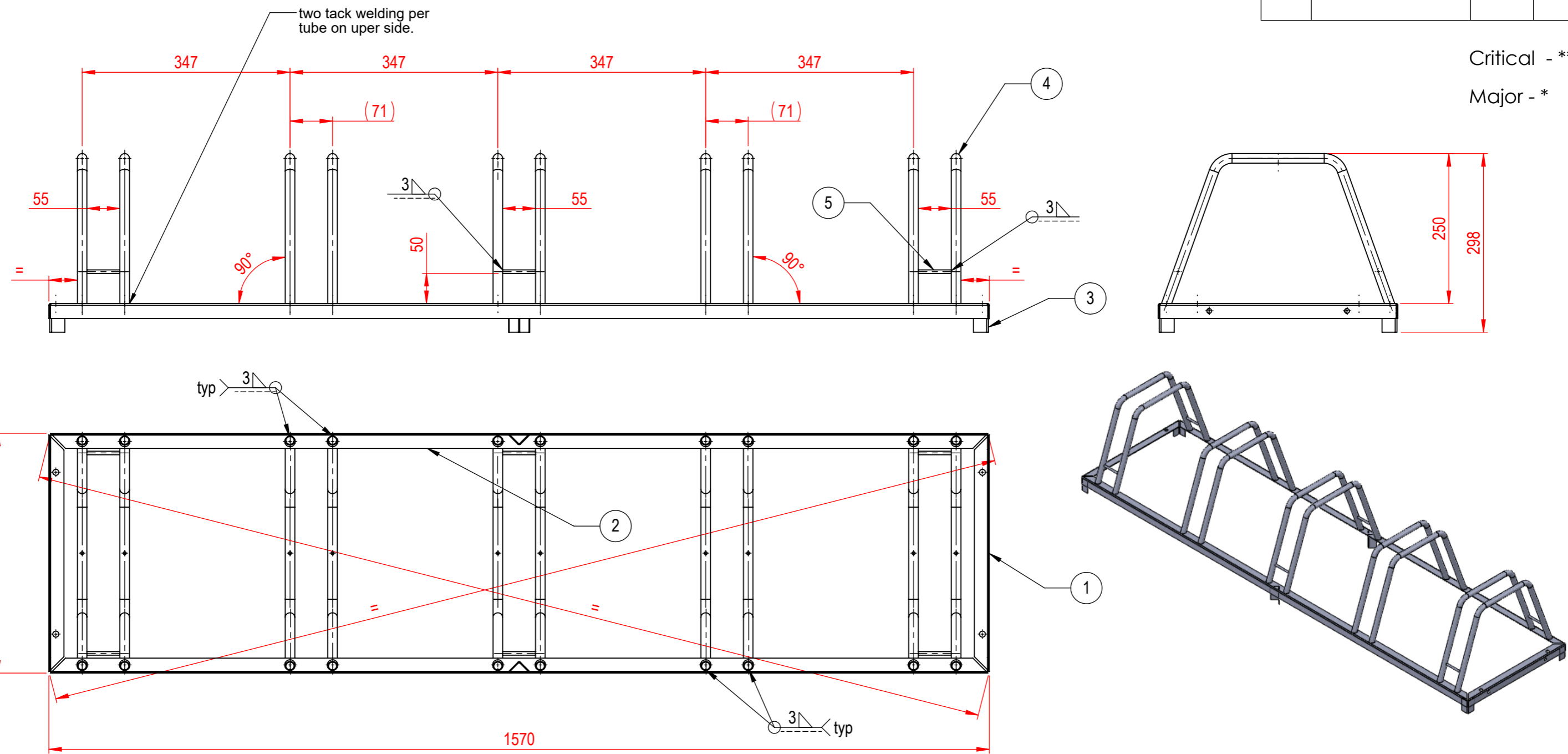


SCALE : - N.T.S.

REV. No.	DESCRIPTION	REV. DATE	SIGN.

Critical - **
Major - *



Main Assy. Drg.

Part No.	Part Name	Raw Material Size	Qty. Pcs.	Drawing No.	Material Grade	Finish	Net Weight
1	Angle	25x25x1.5x395	2	KIGH-1102-026	S235 JR	As Per Requirement	0.420
2	Angle	25x25x1.5x1565	2	KIGH-1102-026	S235 JR	As Per Requirement	1.679
3	Angle	25x25x1.5x46	6	KIGH-1103-026	S235 JR	As Per Requirement	0.154
4	Round Tube	Ø16x1.2x700	10	KIGH-1103-026	S235 JR	As Per Requirement	3.064
5	Rod	Ø6x55	6	KIGH-1103-026	S235 JR	As Per Requirement	0.073

- Note:-
1. Unspecified tolerance should be as per standard ISO 2768(v).
 2. Piece should be free from crack, burr, sharp edges, rust, pitting & scaling.
 3. Welding layer should be uniform & Spatter free.
 4. Material :- Refer part table.
 5. Finish :- As per requirement.

All Dimension are in MM.

TOLERANCE AS PER STANDARD ISO 2768(v)								
Tol.	0.5 to 3	3 to 6	6 to 30	30 to 120	120 to 400	400 to 1000	1000 to 2000	2000 to 4000
v	-----	±0.5	±1	±1.5	±2.5	±4	±6	±8

STANDARD FOR GALVANIZING BS EN ISO 1461						
Article & Thickness	Steel < 6 mm	Steel ≥ 3 mm to < 6 mm	Steel ≥ 1.5 mm to < 3 mm	Steel < 1.5 mm	Casting ≥ 6 mm	Casting < 6 mm
Local Coating Thickness (Min.) µm	70	55	45	35	70	60
Mean Coating Thickness (Min.) µm	85	70	55	45	80	70

Keaa International Pvt. Ltd.

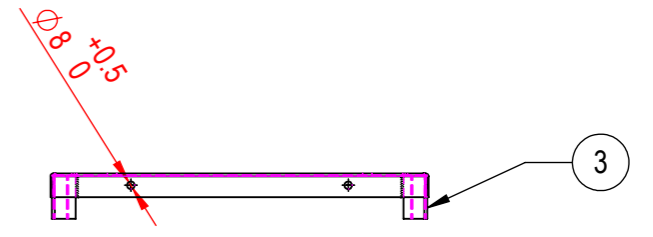
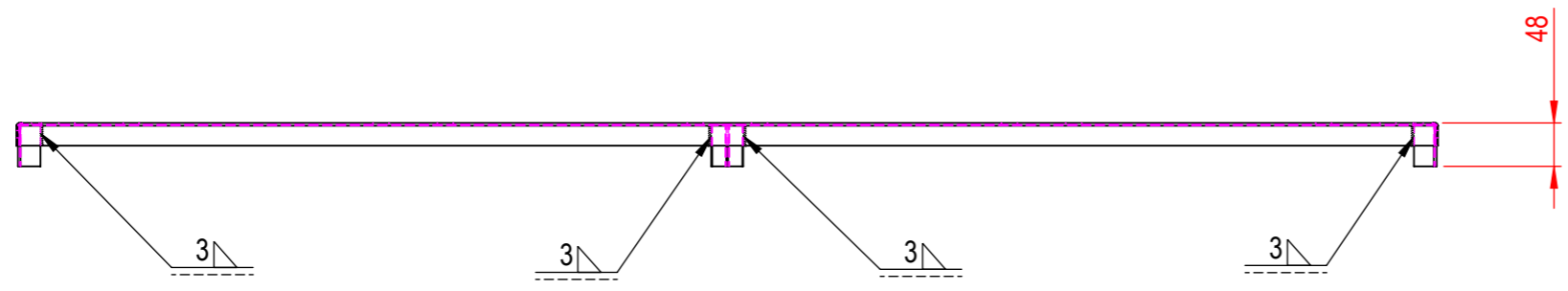
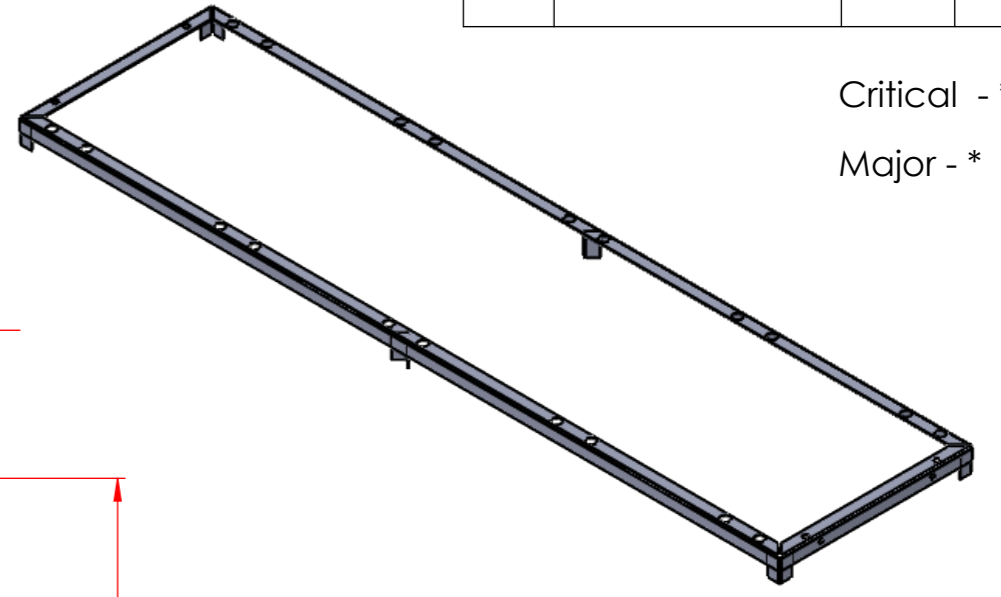
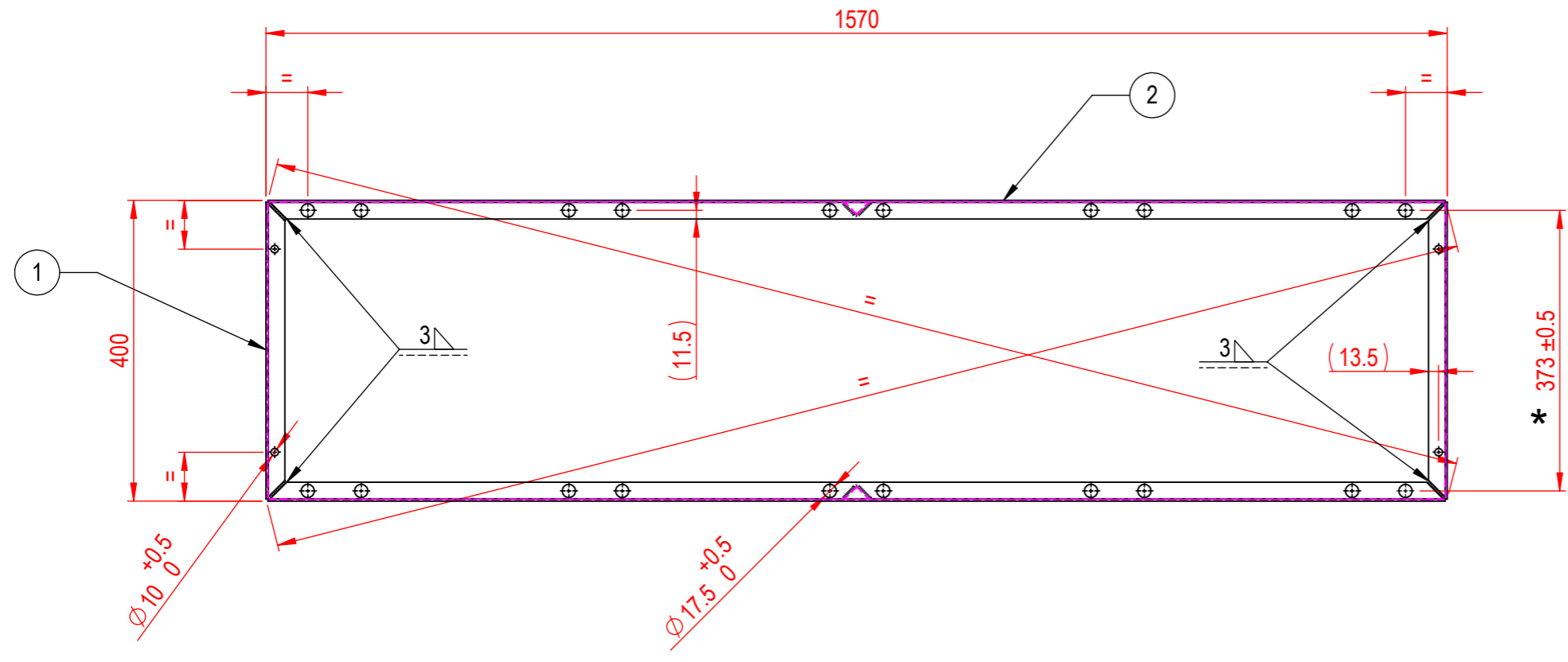
DRAWN BY		ORG. DATE	05-05-12	PROJECTION	
CHK'D BY		EFFECTIVE DATE	05-05-12	CUSTOMER CODE:	831913
APPV'D BY		FINISH:	As Per Requirement	REF.	-----

DWG. NO.	KIGH-1100-026	REV. No.	NIL
PART. NAME	BICYCLE STAND 5 PLACES (1570x400) (55) MM		
MATERIAL:	REFER PART TABLE	WEIGHT	5.390 kg

SCALE : - N.T.S.

REV. No.	DESCRIPTION	REV. DATE	SIGN.

Critical - **
Major - *



Part Assy. Drg.

- Note:-
1. Unspecified tolerance should be as per standard ISO 2768(v).
 2. Piece should be free from crack, burr, sharp edges, rust, pitting & scaling.
 3. Welding layer should be uniform & Spatter free.
 4. Material :- Refer assy. drg. table.
 5. Finish :- As per requirement.

All Dimension are in MM.

TOLERANCE AS PER STANDARD ISO 2768(v)								
Tol.	0.5 to 3	3 to 6	6 to 30	30 to 120	120 to 400	400 to 1000	1000 to 2000	2000 to 4000
v	-----	±0.5	±1	±1.5	±2.5	±4	±6	±8

STANDARD FOR GALVANIZING BS EN ISO 1461							
Article & Thickness	Steel < 6 mm	Steel ≥ 3 mm to < 6 mm	Steel ≥ 1.5 mm to < 3 mm	Steel < 1.5 mm	Casting ≥ 6 mm	Casting < 6 mm	
Local Coating Thickness (Min.) μm	70	55	45	35	70	60	
Mean Coating Thickness (Min.) μm	85	70	55	45	80	70	

Keaa International Pvt. Ltd.

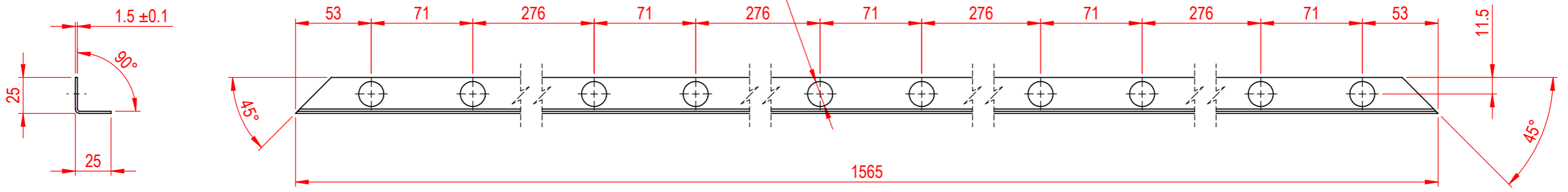
DRAWN BY	SIGNATURE	ORG. DATE	PROJECTION
CHK'D BY		05-05-12	
APPV'D BY			
EFFECTIVE DATE	05-05-12		CUSTOMER CODE: 831891
FINISH:	As Per Requirement		REF. -----

DWG. NO.	KIGH-1101-026	REV. No.	NIL
PART. NAME	BICYCLE STAND 5 PLACES (1570x400) (55) MM		
MATERIAL:	REFER ASSY. DRG. TABLE	WEIGHT	

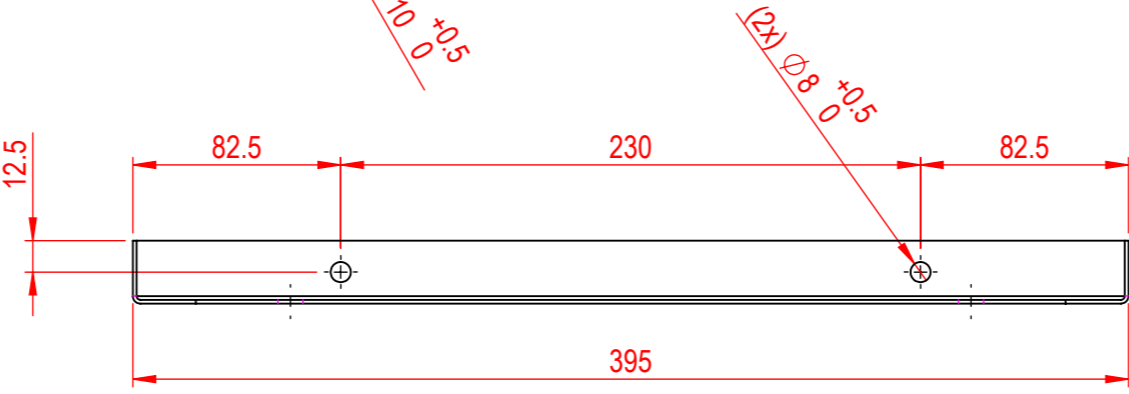
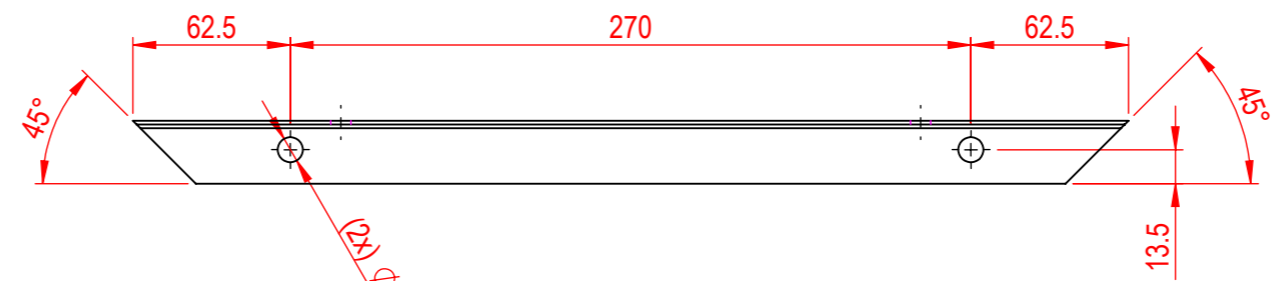
SCALE : - N.T.S.

REV. No.	DESCRIPTION	REV. DATE	SIGN.

Critical - **
Major - *



Part - 2 (Angle)



Part - 1 (Angle)

- Note:-
1. Unspecified tolerance should be as per standard ISO 2768(v).
 2. Piece should be free from crack, burr, sharp edges, rust, pitting & scaling.
 3. Material :- Refer assy. drg. table.
 4. Finish :- As per requirement.

All Dimension are in MM.

TOLERANCE AS PER STANDARD ISO 2768(v)								
Tol.	0.5 to 3	3 to 6	6 to 30	30 to 120	120 to 400	400 to 1000	1000 to 2000	2000 to 4000
v	-----	±0.5	±1	±1.5	±2.5	±4	±6	±8

STANDARD FOR GALVANIZING BS EN ISO 1461						
Article & Thickness	Steel < 6 mm	Steel ≥ 3 mm to < 6 mm	Steel ≥ 1.5 mm to < 3 mm	Steel < 1.5 mm	Casting ≥ 6 mm	Casting < 6 mm
Local Coating Thickness (Min.) μm	70	55	45	35	70	60
Mean Coating Thickness (Min.) μm	85	70	55	45	80	70

Keaa International Pvt. Ltd.

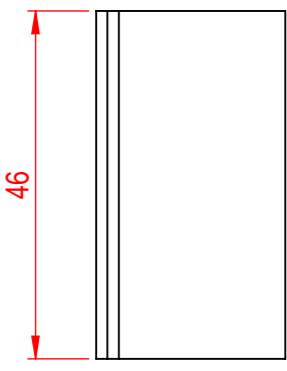
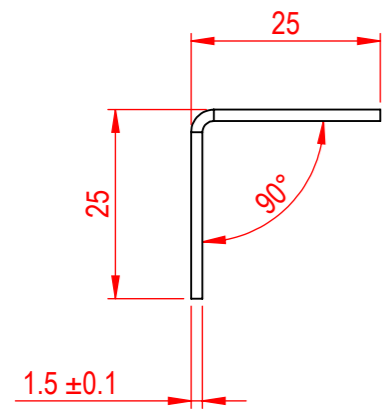
DWG. NO.	KIGH-1102-026	REV. No.	NIL
PART. NAME			
BICYCLE STAND 5 PLACES (1570x400) (55) MM			
MATERIAL:		WEIGHT	
REFER ASSY. DRG. TABLE			

DRAWN BY	SIGNATURE	ORG. DATE	PROJECTION
CHK'D BY		05-05-12	
APPV'D BY			CUSTOMER CODE: REF.
EFFECTIVE DATE	05-05-12		
FINISH: As Per Requirement			

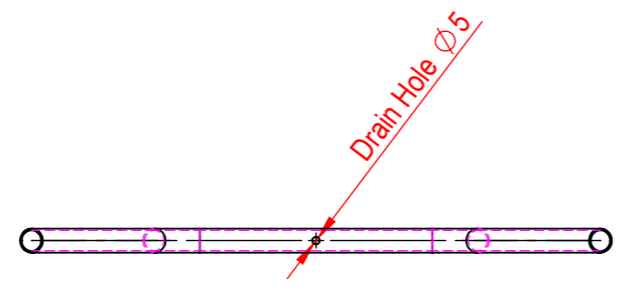
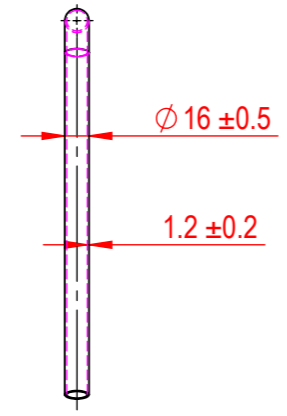
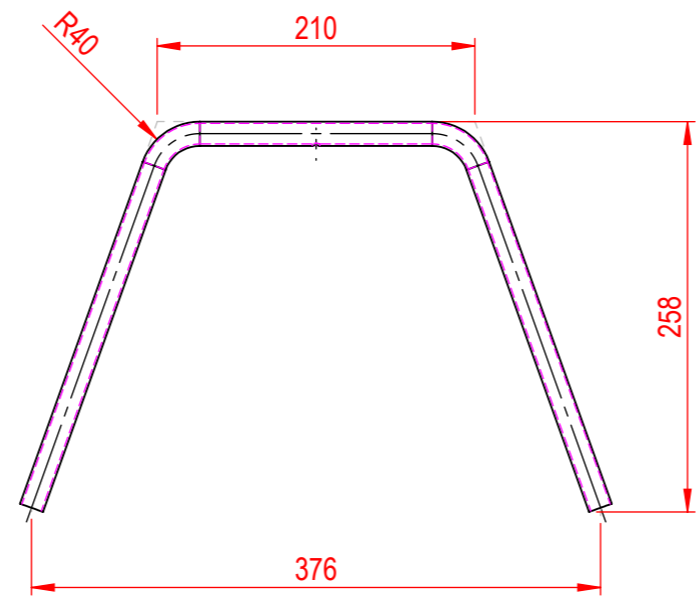
SCALE : - N.T.S.

REV. No.	DESCRIPTION	REV. DATE	SIGN.

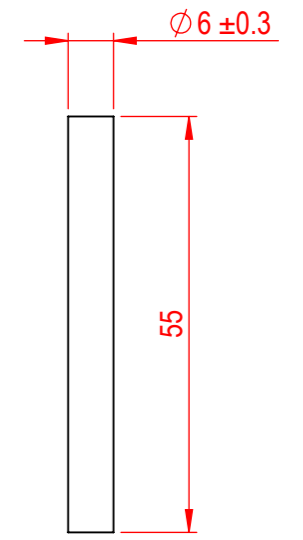
Critical - **
Major - *



Part - 3 (Angle)



Part - 4 (Round Tube)



Part - 5 (Rod)

Note:-
1. Unspecified tolerance should be as per standard ISO 2768(v).
2. Piece should be free from crack, burr, sharp edges, rust, pitting & scaling.
3. Material :- Refer assy. drg. table.
4. Finish :- As per requirement.

All Dimension are in MM.

TOLERANCE AS PER STANDARD ISO 2768(v)								
Tol.	0.5 to 3	3 to 6	6 to 30	30 to 120	120 to 400	400 to 1000	1000 to 2000	2000 to 4000
v	-----	±0.5	±1	±1.5	±2.5	±4	±6	±8

STANDARD FOR GALVANIZING BS EN ISO 1461							
Article & Thickness	Steel < 6 mm	Steel ≥ 3 mm to < 6 mm	Steel ≥ 1.5 mm to < 3 mm	Steel < 1.5 mm	Casting ≥ 6 mm	Casting < 6 mm	
Local Coating Thickness (Min.) µm	70	55	45	35	70	60	
Mean Coating Thickness (Min.) µm	85	70	55	45	80	70	

Keaa International Pvt. Ltd.

DRAWN BY	SIGNATURE	ORG. DATE	PROJECTION
CHK'D BY		05-05-12	
APPV'D BY			CUSTOMER CODE: REF.
EFFECTIVE DATE	05-05-12		
FINISH:	As Per Requirement		

DWG. NO.	KIGH-1103-026	REV. No.	NIL
PART. NAME	BICYCLE STAND 5 PLACES (1570x400) (55) MM		
MATERIAL:	REFER ASSY. DRG. TABLE	WEIGHT	