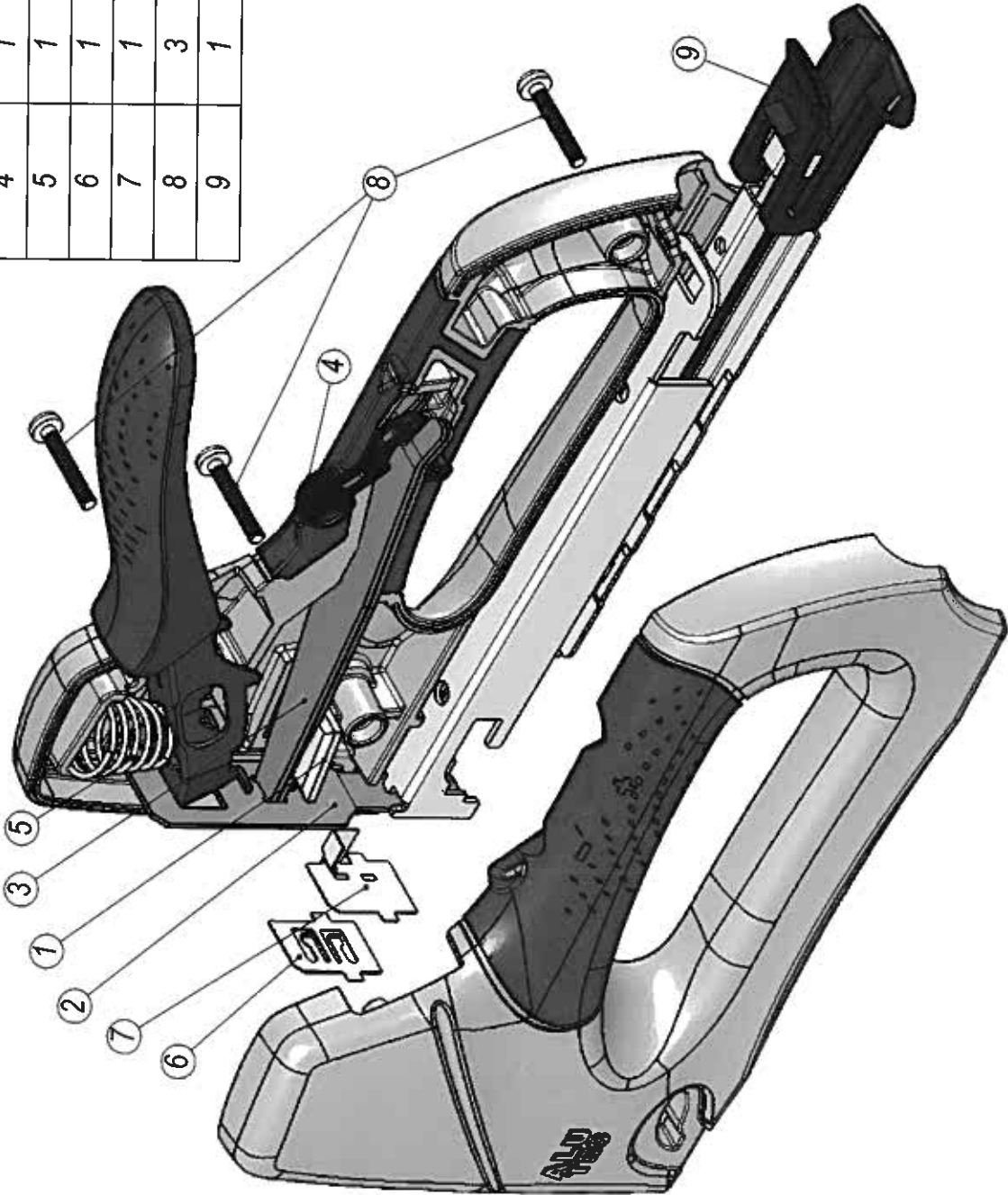




SPARE PARTS LIST

Designed by gukv	Modified by jaeb	Approved by jaeb	Doc class 053	Dwg no. 236865	Rev. 02
Date 2006-01-20	Scale ---	Approval date 2008-03-06	Designation MS840 Tacker		

Pos.	Qty.	Part No.	Description
1	1	140640	A30 Damper
2	1	164608	A44 Driver
3	2	169599	A253 Spring Blade
4	1	200132	A253 Ergo Force Adjuster
5	1	206125	A253 Ergo Handle Spring
6	1	210009	R64 Ergo Spring Brad Guide
7	1	210010	R64 Ergo Front Brad Guide
8	3	228774	Screw SLS T35x22 KN3039
9	1	230434	MS 800 Feeder 140/13



Remark:
When re-inserting the screws, make sure to locate each screw into the original thread. Turn the screw gently counter-clockwise to find the thread before attempting to screw it home (clockwise).