

Lescha

ABM P 135L

D EG - Konformitätserklärung

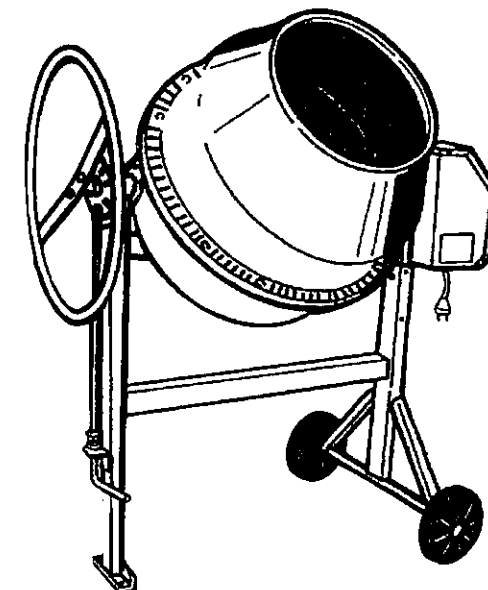
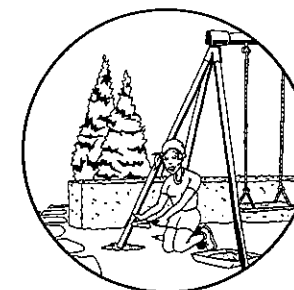
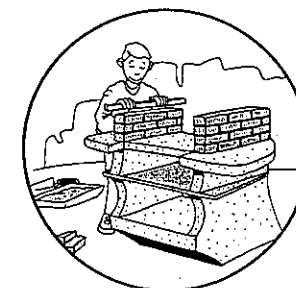
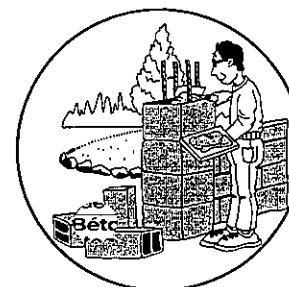
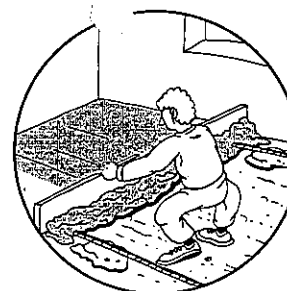
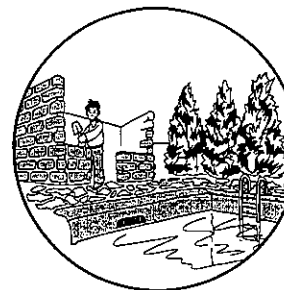
Wir erklären in alleiniger Verantwortung, daß dieses Produkt mit folgenden EG-Richtlinien übereinstimmt: 98/37/EG, 73/23/EWG, 89/336/EWG und 2000/14/EG.

F Declaration de conformité pour la CEE

Nous déclarons en responsabilité seule, que ce produit correspond aux règles suivantes: 98/37/EG, 73/23/CEE, 89/336/CEE et 2000/14/EG.

GB EC - Declaration of conformity

We declare under our sole responsibility, that this product is in accordance with the following directives: 98/37/EG, 73/23/CEE, 89/336/CEE and 2000/14/EG.



ABM P 135L

ALTRAD-Lescha
Josef-Drexler-Str. 8
D-89331 Burgau/Schw.

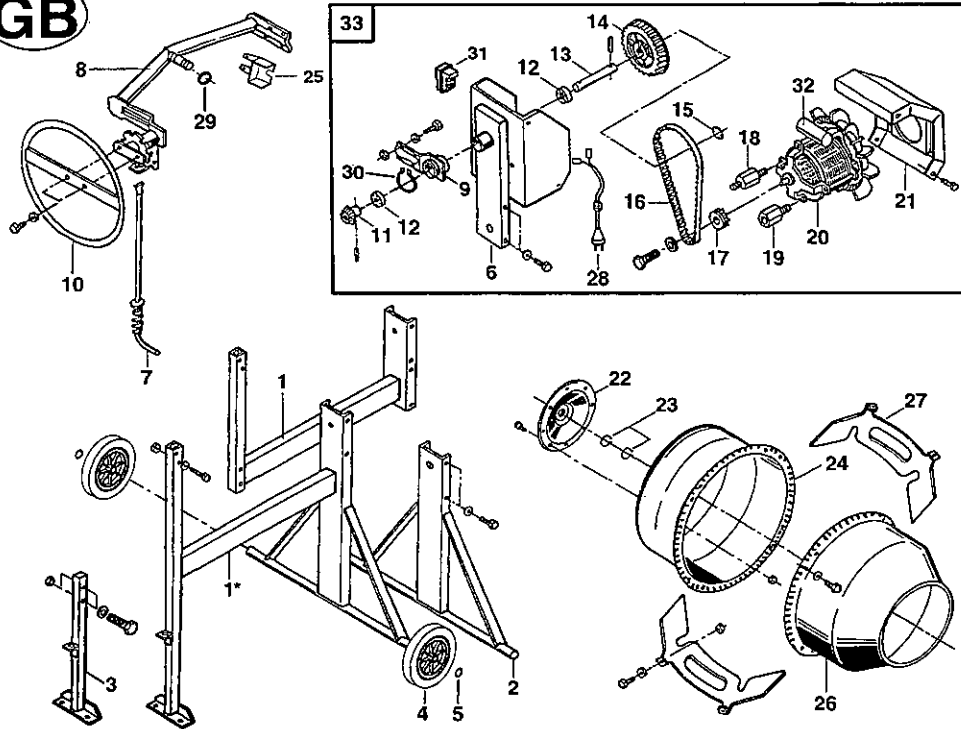
Cédric KAMERER

Président Directeur
Général



401 863

GB



Rep	Qty	ABM P 135L	Designation	Rep	Qty	ABM P 135L	Designation
1	1	391006	Frame	17	1	394002	Pinion motor
1*	1	391500	Frame	18	2	334104	Double support
2	1	391002	Foot	19	1	334105	Simple support
3	1	391001	Foot	20	1	394012	Motor IP 0
4	2	331007	Wheel	21	1	335168	Cover door
5	2	009911	Lock washer ø 20	22	1	399102	Ball race
6	1	391012	Cover	23	2	009916	Circlips 30 x 2e
7	1	393010	SLocking system	24	1	399101	Drum back
8	1	399106	Bracket	25	1	399113	Protection
9	1	393009	Bearing for bracket	26	1	399100	Drum top
10	1	393013	Steering wheel	27	2	399103	Blade
11	1	399104	Pinion	28	1	394066	Plug
12	2	000906	Ball bearing 6202EE	29	1	394030	Joint
13	1	399109	Pin	30	1	009923	Circlips 42 x 1,75 e
14	1	394001	Wheel	31	1	394049	Switch
15	1	009909	Lock washer	32	1	9FCD8	Condenser 8 mF
16	1	394004	Belt	33	1	394140	Compleat cover

GB

■ INSTALLATION

Install the mixer on a hard and horizontal soil in order to ensure a good stability to the machine.

Clear the surroundings of the machine from all thing likely to occasion a risk of accident or to impede the operator.

**◆ Before starting your mixer make sure that :
Electric driven mixer**

- The tension of the network is 230 volts on two wires.
- Minimum capacity of the meter should be 5 Amps.
- The motor hood set benefits from double insulation class II protection grade IP 44.
- Foresee a two wires supply cable having a section of 2,5 mm² for a maximum length of 50 m (equipment class II no need for a ground wire). If length is more than 50 m, foresee a cable with a bigger section.

■ MAINTENANCE

- After each use, clean the inside and the outside of your mixer. If you wash it with a high pressure cleaner, make sure that the water projections do not reach the motor.
- For a good and efficient leaning of the drum, use a shovel of gravels and water.
- Do not forget from time to time to grease the bearing of the bracket, a hole is foreseen for this.
- The bearings of the drum and of the driving axle are greased for life.
- The slew ring is made of synthetic material, high resistance, unalterable, maintenance and greasing free, which participates efficiently to the reduction of sound nuisances.

SAFETY INSTRUCTIONS

General

Before starting your mixer, check that :

- all protection devices are in position and good condition.
- Nobody is into contact or close to the mixer, and no tool is leaning against it.
- Never let a cable rolled on its support, this will cause impodant drops of tension and lead to overheating.
- The line must be fitted with fuses or circuit breaker to ensure the protection.
- Do not plug in and use the electric motor without making sure that the motor hood is closed.

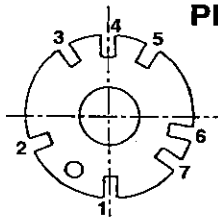
INSTRUCTIONS FOR USE - MAINTENANCE - SPARE PARTS

Concrete mixer ABM P 135L



TECHNICAL DATA		ABM P 135L
Drum capacity	L	130
Maximum mixing capacity	L	110
Single phase motor 230V/50Hz		
Used power	W	600
Length	mm	1220
Width	mm	700
Height	mm	1280
Wheels	ø mm	160
Weight	kg	48

PRODUCTION OF CONCRETES AND MORTARS



The tilting disk has 7 different notches

- Position 1 Opening of the drum upward.
- Position 2 Mixing on lefthand side.
- Position 3 Emptying on lefthand side and storing.
- Position 4 Opening of the drum downward.
- Position 5 Emptying on righthand side and storing.
- Position 6 et 7 Mixing on righthand side.

Batch for usual concrete and mortar (with one 25 kg cement bag).			
	Sand	Gravel	Water
Concrete	30 L	60 L	around 13 L
Mortar	60 L	-	around 13 L

- Set the drum at the selected angle (on one side or the other). The angle the nearest to the horizontal will provide a better mixing of the aggregates, but will reduce the capacity.

- Put some water into the drum, spread the right quantity of cement over the aggregates (gravel or sand), and load the drum. Add some water while loading.

- The enclosed chart will guide you in the proportions of your works. The quantity of water is given as an indication only ; it will depend on the degree of humidity of the aggregates. These proportions are given as information only, and

cannot engage the responsibility of the manufacturer.

- 1 shovel = 4 litres, 1 wheelbarrow = 60 litres.

- Let the drum turn during one minute or so, in order to obtain a good mix. Do not continue the mixing beyond two minutes otherwise you will centrifugate the materials.

The above sizes are for your information and cannot engage the responsibility of the manufacturer.

SAFETY INSTRUCTIONS

- The operator must wear appropriate shoes and working clothes.
- Do not put hands, head or any tool inside the drum while it is running.
- Never operate the mixer without its protections.
- Never open the hood of the electric motor while the latter is running.
- Stop and unplug your mixer before proceeding to any kind of interventions.
- Use your mixer only to mix materials for construction (any other mixing of chemical or food products is not recommended).
- Never replace a part by a non-genuine one.

Unplug the supply cable before every cover opening. The appliance must be used only when all protections are setting.

Be careful ! Doubly insulated machine. During repairs, class II keeps preserved only when origin parts are used and insulation distances remain unchanged.

Maintenance

The pinion driving the drum is a wearing part of your mixer. In order to avoid any immobilization, it is recommended to foresee a replacement beforehand.

■ SPARE PARTS

For all orders, contact the nearest dealer, and specify the type and serial number of your mixer (plate on engine hood).

Indicate the quantity, the designation, and the number of the parts you need.

■ MODIFICATION OF THE PRODUCT

With the aim to constantly improve the quality and the efficiency of our products, we reserve the right to modify, at any moment and without prior notice, the product as described hereby.

■ WARRANTY

The manufacturer warranties your mixer for a period of 12 MONTHS as from the date of purchase. This warranty covers the free replacement of the parts which will be acknowledged as defective, as the result of a default in the construction or a default in the material. The manufacturer reserves the right to make a valuation of the defective pieces. No warranty will apply to failures caused by : an improper handling or manoeuvring, a bad use, the use of non genuine spare parts, or a bad maintenance. The warranty of the engines is ensured by the manufacturer of those.

The manufacturer takes no responsibility in the event of failure to respect the safety instructions and utilization rules.