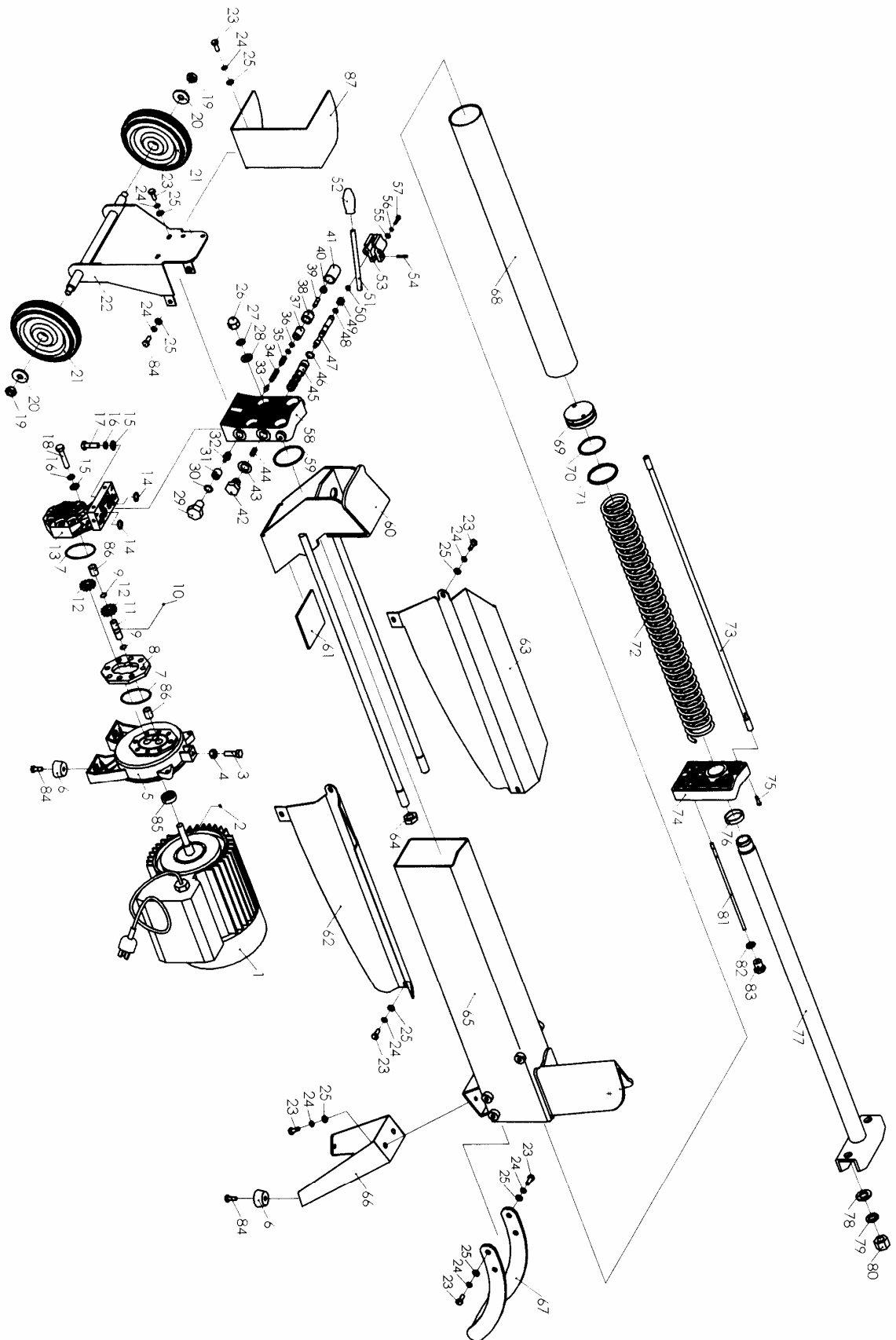


EXPLODED VIEW



PARTS LIST

Part No.	Description	Q'ty	Part No.	Description	Q'ty
1	Motor	1	45	Controlling valve	1
2	Pin	1	46	Sealing ring	5
3	Rubber pad	1	47	Controlling shaft	1
4	Nut	1	48	Sealing ring	1
5	Motor front cover	1	49	Sealing ring	1
6	Rubber foot	4	50	E-ring	1
7	Sealing ring	2	51	Handle	1
8	Casting iron plate	1	52	Knob	1
9	Steel ring	2	53	Fixing bracket	1
10	Steel ball	1	54	Elastic pin	1
11	Key	1	55	Flat washer	2
12	Gear	2	56	Elastic washer	2
13	Oil pump body	1	57	Screw	2
14	Sealing ring	2	58	Front cover	1
15	Flat washer	9	59	Sealing ring	1
16	Elastic washer	9	60	Log pusher	1
17	Bolt	3	61	Plastic pad	2
18	Bolt	6	62	Right log retention bracket	1
19	Locking nut	2	63	Left log retention bracket	1
20	Big flat washer	2	64	Nut	2
21	Rolling wheel	2	65	Oil tank	1
22	Rolling wheel bracket	1	66	Supporting leg	1
23	Bolt	14	67	Carrying handle	1
24	Elastic washer	16	68	Cylinder tube	1
25	Flat washer	16	69	Piston	1
26	Nut	4	70	Sealing ring	1
27	Elastic washer	4	71	Plastic ring	1
28	Flat washer	4	72	Spring	1
29	Bolt	1	73	2-head rod	4
30	Sealing ring	1	74	Rear cover	1
31	Screw	1	75	Screw	1
32	Oil valve	1	76	Dust proof ring	1
33	Cone valve	1	77	Piston rod	1
34	Adjusting spring	1	78	Flat washer	2
35	Short shaft	1	79	Elastic washer	2
36	Sealing ring	2	80	Nut	2
37	Tube for short shaft	1	81	Oil level stick	1
38	Nut	1	82	Sealing ring	1
39	Screw	1	83	Oil level stick cap	1
40	Nut	1	84	Bolt	6
41	Plastic cap	1	85	Sealing bush	1
42	Position bolt	1	86	Bearing	4
43	Brass washer	1	87	Safety cover	1
44	Spring	1			